



RIKI GLOBAL
performance through innovation



RSolv[®]
LIFE SCIENCES

Content	Page
Technical Specifications	2
Application Notes:	
Diuretics	
Aromatic Acid	4
Uracil and 5-Fluoracil	
Creatine and Creatinine	5
Taxol	
Steroids	6



TECHNICAL SPECIFICATIONS

Phase	Particle size (µm)	Pore size (Å)	Surface area (m ² /g)	Carbon load (%)	Endcapped	USP	pH Range
CAPELLA-60 Å							
C18	3, 5, 10	60	500	22.0	Yes	L1	3.0-8.5
C8	3, 5, 10	60	500	14.0	Yes	L7	3.0-8.5
C6	3, 5, 10	60	500	10.0	Yes	L15	2.0-8.0
C4	3, 5, 10	60	500	8.0	No	L26	2.0-8.0
Phenyl	3, 5, 10	60	500	16.0	Yes	L11	2.0-8.0
Biphenyl	5	60	500	10.0	Yes	L11	2.0-8.0
PFP	3, 5, 10	60	500	12.0	Yes	L43	3.0-8.5
CN	3, 5, 10	60	500	8.0	No	L10	2.0-8.0
AMINO	3, 5, 10	60	500	6.0	No	L8	2.0-8.0
DIOL	3, 5, 10	60	500	9.0	No	L20	2.0-8.0
DIOL-HL	5, 10	60	500	9.0	No	L20	2.0-8.0
Silica	3, 5, 10	60	500	N/A	Yes	L3	2.0-8.0
Phase	Particle size (µm)	Pore size (Å)	Surface area (m ² /g)	Carbon load (%)	Endcapped	USP	pH Range
CAPELLA-100Å							
C18	3, 5, 10	100	325	19.0	Yes	L1	3.0-8.5
C8	3, 5, 10	100	325	11.0	Yes	L7	3.0-8.5
C6	3, 5, 10	100	325	8.0	Yes	L15	2.0-8.0
C4	3, 5, 10	100	325	6.0	No	L26	2.0-8.0
Phenyl	3, 5, 10	100	325	12.0	Yes	L11	3.0-8.5
PFP	3, 5, 10	100	325	9.0	Yes	L43	3.0-8.5
CN	3, 5, 10	100	325	6.0	No	L10	3.0-8.5
AMINO	3, 5, 10	100	325	4.0	No	L8	3.0-8.5
DIOL	3, 5, 10	100	325	4.0	No	L20	3.0-8.5
Silica	3, 5, 10	100	325	N/A	N/A	L3	3.0-8.5



Phase	Particle size (µm)	Pore size (Å)	Surface area (m ² /g)	Carbon load (%)	Endcapped	USP	pH Range
CAPELLA-300Å							
C18	5, 10	300	100	8.0	Yes	L1	3.0-8.5
C8	5, 10	300	100	5.0	Yes	L7	3.0-8.5
C6	5, 10	300	100	3.0	No	L26	3.0-8.5
C4	5, 10	300	100	5.0	Yes	L11	3.0-8.5
CN	5, 10	300	100	3.0	No	L10	3.0-8.5
AMINO	5, 10	300	100	3.0	No	L8	3.0-8.5
DIOL	5, 10	300	100	2.0	No	L20	3.0-8.5
Silica	5, 10	300	100	N/A	N/A	L3	3.0-8.5
Phase	Particle size (µm)	Pore size (Å)	Surface area (m ² /g)	Carbon load (%)	Endcapped	USP	pH Range
CAPELLA SPECIAL PHASES							
C3 - Propyl	3, 5, 10	200	200	19.0	No	L62	2.0-8.0
C12 with Adamantane (HTS)	3, 5, 10	60	500	13.0	Yes	-	3.0-8.5
Cyclohexyl (C6H12)	3, 5, 10	60	500	12.0	Yes	-	2.0-8.0
Fluorooctyl (C8H16F5)	3, 5, 10	100	325	8.0	Yes	-	3.0-8.5
Fluoropropyl (C3H6F5)	3, 5, 10	100	325	5.0	No	-	3.0-8.5
Phase	Particle size (µm)	Pore size (Å)	Surface area (m ² /g)	Carbon load (%)	Endcapped	USP	pH Range
SIRIUS PHASES (POLAR EMBEDDED AMIDE STATIONARY PHASE)							
C18	3, 5, 10	100	325	16.0	Yes	L1	3.0-8.5
C8	3, 5, 10	100	325	13.0	Yes	L7	3.0-8.5
Phenyl	3, 5, 10	100	325	12.0	Yes	L11	3.0-8.5
Phase	Particle size (µm)	Pore size (Å)	Surface area (m ² /g)	Carbon load (%)	Endcapped	USP	pH Range
RIGEL PHASES (REPLACEMENT FOR WATERS µBONDAPAK APPLICATION)							
C18	5, 10	125	300	10.0	Yes	L1	3.0-8.5
Phenyl	10	125	300	8.0	Yes	L11	3.0-8.5
CN	10	125	300	6.0	No	L10	3.0-8.5
AMINO	10	125	300	4.0	No	L8	3.0-8.5
Silica	10	125	300	N/A	N/A	L3	3.0-8.5
Phase	Particle size (µm)	Pore size (Å)	Surface area (m ² /g)	Carbon load (%)	Endcapped	USP	pH Range
DENEBCORE (SUPERFICIALLY POROUS SILICA)							
Core-C18	2.7, 5	100	325	9.0	Yes	L1	3.0-8.5
Core-C18-EX	2.7, 5	100	325	9.0	Yes	L1	3.0-8.5
Core-C8	2.7, 5	100	325	9.0	Yes	L1	3.0-8.5

Application Notes

DIURETICS

Column: RSOLV CAPELLA C18 5 μ m

Catalog No: RS1-3B050-15046

Dimensions: 150 X 4.6MM

Eluent: 60:40 A:B

A: 20 mM NH₂H₂ , pH 3.2

B: Acetonitrile

Flow Rate: 1.5 ml/min

Temperature: 40°C

Detection: UV at 280 nm

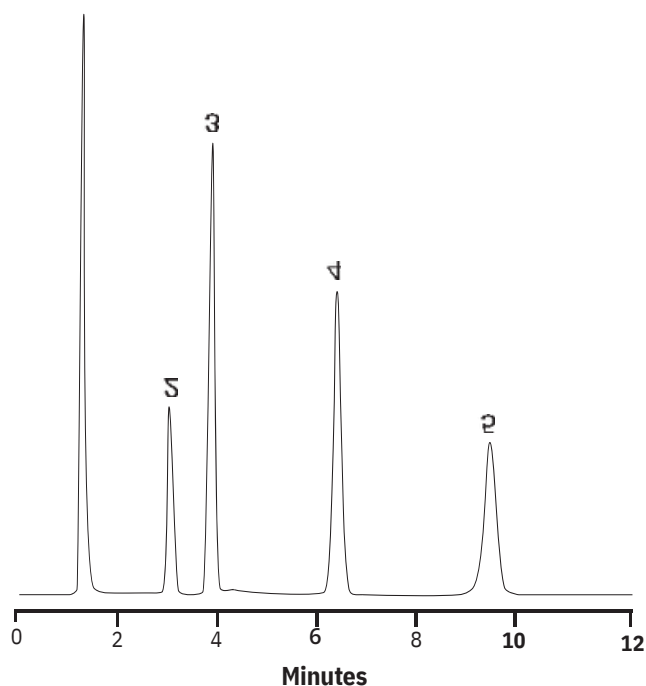
Injection: 10 μ l (1 mg/ml sample)

1. Hydrochlorothiazide

2. Chlorthalidone

3. Diazoxide

4. Furosemide



AROMATIC ACIDS

Column: RSOLV CAPELLA C18 5 μ m

Catalog No: RS1-3B050-10046

Dimensions: 100 X 4.6MM

Eluent: 50:50 A:B

A: 0.1M H₃ , pH 2.0

B: Methanol

Flow Rate: 1.5 ml/min

Temperature: Ambient

Detection: UV at 240 nm

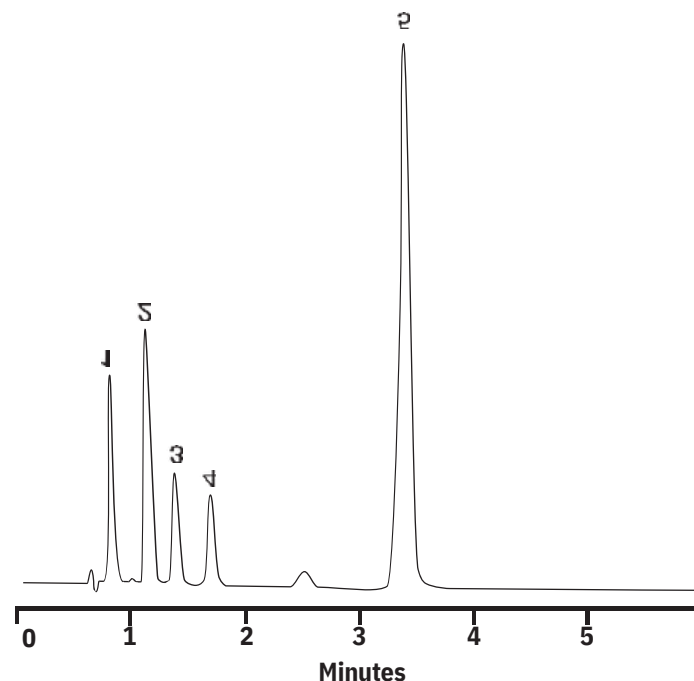
Injection: 5 μ l (1 mg/ml sample)

1. p-Aminobenzoic acid

2. p-Hydroxybenzoic acid

3. o-Aminobenzoic acid

4. Benzyl alcohol 5. Salicylic acid



URACIL AND 5-FLUOROURACIL

Column: RSOLV CAPELLA 60Å DIOL 5µm

Catalog No: RS1-7A050-25046

Dimensions: 250 X 4.6MM

Eluent: 80:20 A:B

A: Acetonitrile

B: Water

Flow Rate: 1.0 mL/min

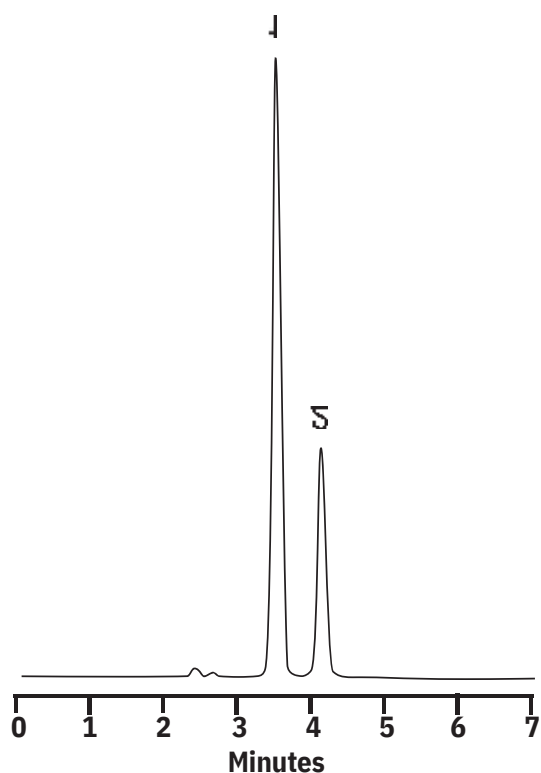
Temperature: 20°C

Detection: UV at 254 nm

Injection: 10 µl (1 mg/mL sample)

1. 5-Fluorouracil

2. Uracil



CREATINE AND CREATININE

Column: RSOLV CAPELLA PHARMABOND C18 125Å 10µm

Catalog No: RS1-22C100-30039

Dimensions: 300 X 3.9MM

Eluent: 70:30 A:B

A: 0.2% H3 4

B: Acetonitrile

with 1.4 mg/mL dodecyl sulfate sodium

Flow Rate: 1.0 ml/min

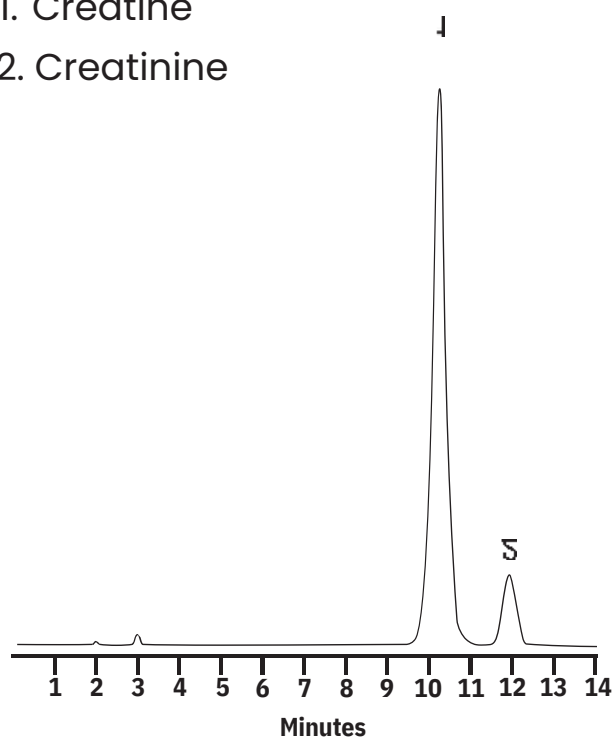
Temperature: 20°C

Detection: UV at 210 nm

Injection: 5 µl (1 mg/mL sample)

1. Creatine

2. Creatinine



TAXOL

Column: RSolv CAPELLA 60Å PFP 5µm

Catalog No: RS1-23A050-25046

Dimensions: 250 X 4.6MM

Eluent: 50:50 A:B

A: Acetonitrile

B: Water

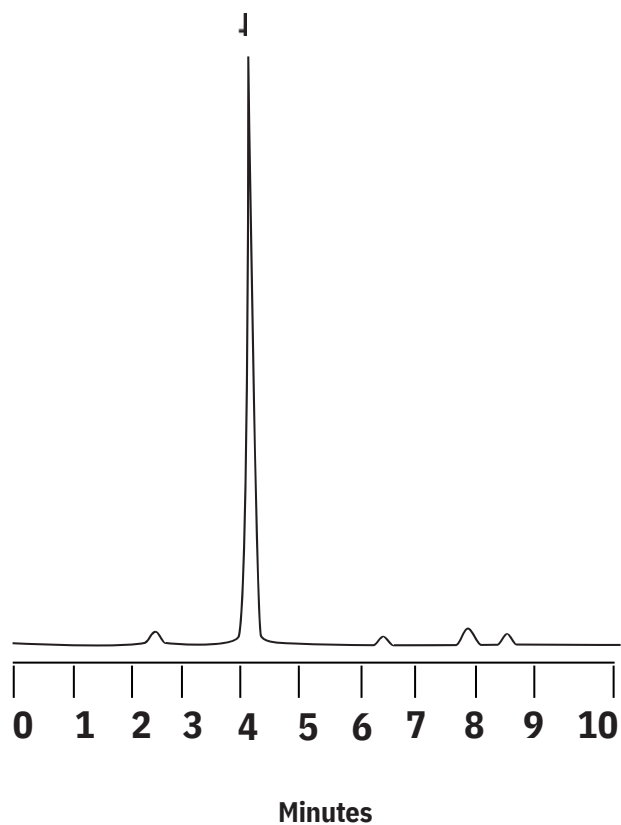
Flow Rate: 1.0 mL/min

Temperature: 30°C

Detection: UV at 230 nm

Injection: 10 µl (1 mg/mL sample)

1. Taxol



STEROIDS

Column: RSolv CAPELLA C18 5µm

Catalog No: RS1-3B050-25046

Dimensions: 50 X 4.6MM

Eluent: 66 A:B

A: Acetonitrile

B: Water

Flow Rate: 1.0 mL/min

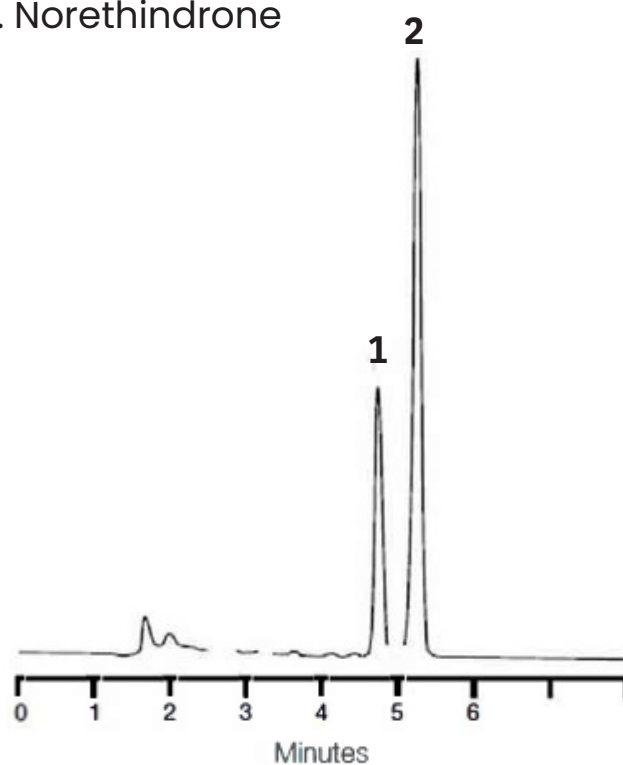
Temperature: 20°C

Detection: UV at 200 nm

Injection: µl (1 mg/mL sample)

1. Ethinyl Estradiol

2. Norethindrone



RSolv HPLC Columns

Where quality meets value



**Precision you can trust,
with affordability you'll
love**

For more information, Contact us at