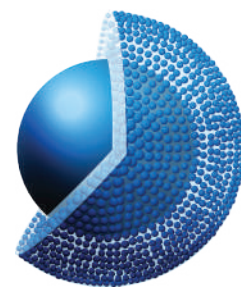


# Avantor® ACE® UltraCore



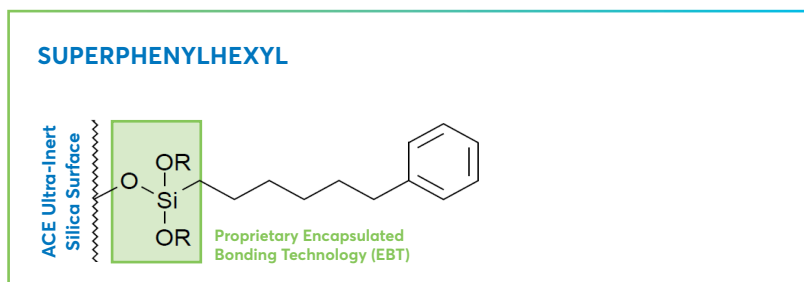
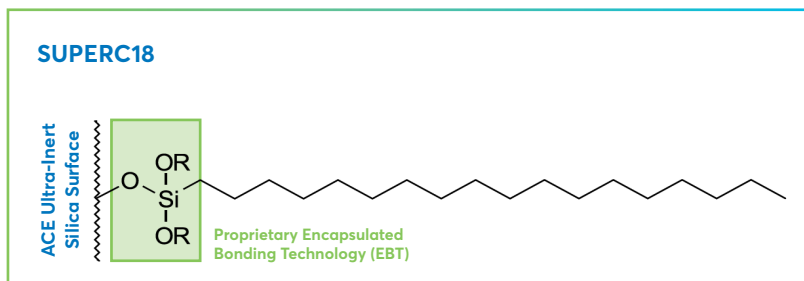
High throughput and high efficiency ultra-fast separations are achievable using ACE UltraCore – ultra-inert solid-core columns. ACE UltraCore columns utilise ultra-high purity solid-core silica with a monodisperse particle distribution to combine high efficiency with low backpressure. Achieve UHPLC-like performance using HPLC instrumentation with ACE UltraCore.

- Ultra-inert solid-core particles
- SuperC18 and SuperPhenylHexyl phases – with complementary selectivity for method development
- SuperC18 and SuperPhenylHexyl have extended pH range 1.5–11.0
- Designed for LC-MS applications

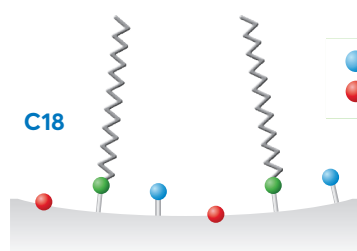
## PHASE SPECIFICATIONS

Phase	USP Listing	Functional group	Encapped	Particle size (µm)	Pore size (Å)	Surface area (m <sup>2</sup> /g)	Carbon load (%)	pH range	100% aqueous compatibility
ULTRACORE SUPERC18	L1	Octadecyl	Encapsulated	2.5	95	130	7	1.5 – 11.0	-
				5		100	5.4		
ULTRACORE SUPERPHENYLHEXYL	L11	Phenyl-Hexyl	Encapsulated	2.5	95	130	4.6	1.5 – 11.0	Yes
				5		100	3.6		

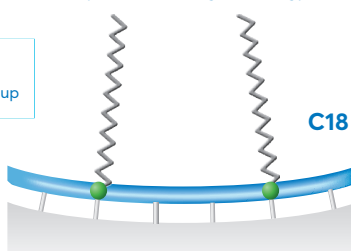
ACE UltraCore SuperC18 and SuperPhenylHexyl phases are manufactured using our unique Encapsulated Bonding Technology (EBT). This technology dramatically increases ligand coverage of the silica surface and effectively eliminates the negative effects of unbonded silanol groups. The higher ligand coverage results in improved inertness, chromatographic performance and stability.



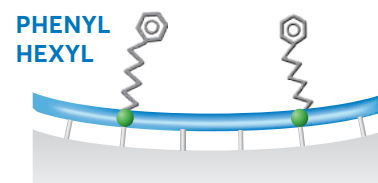
### TRADITIONAL C18 BONDING

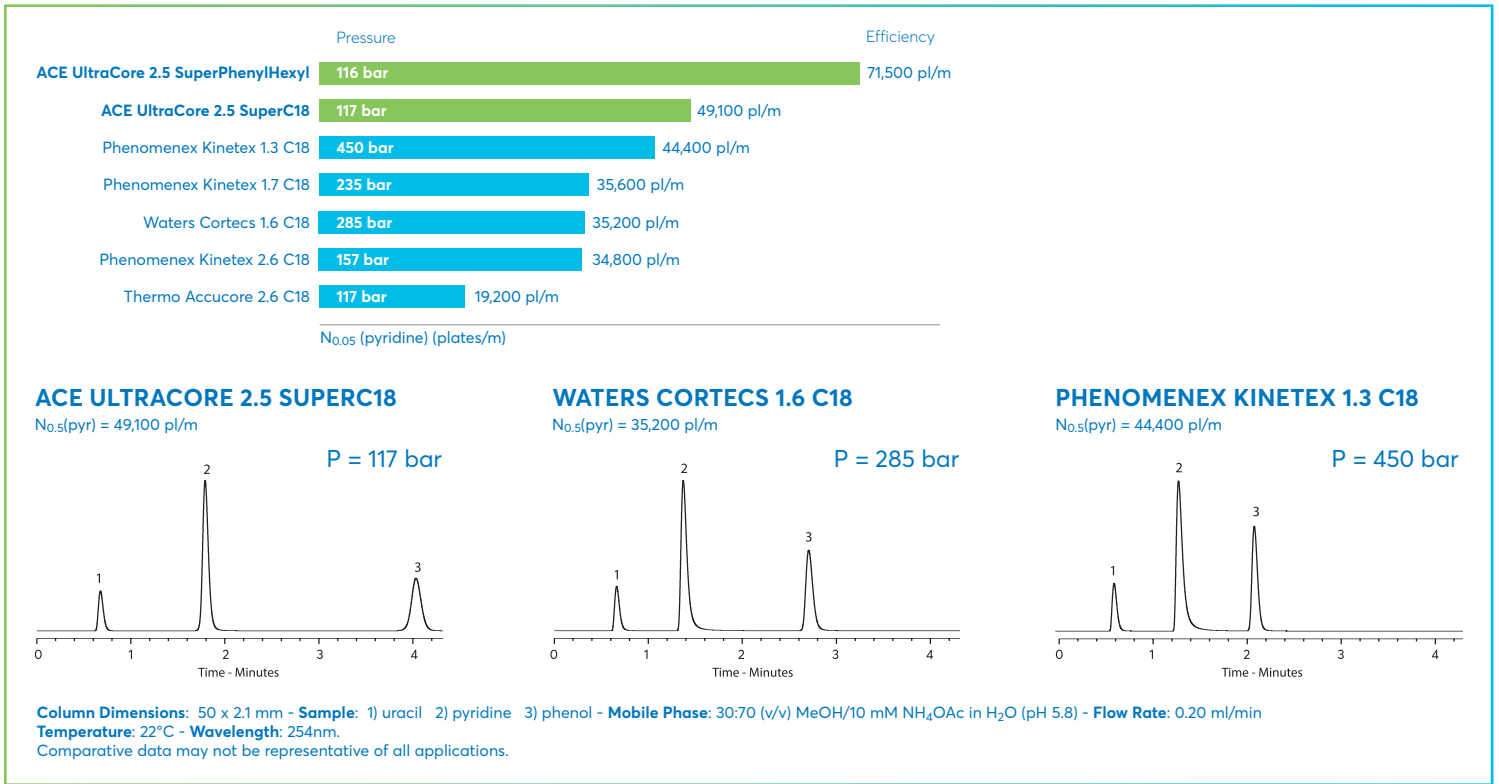


### ACE® ULTRACORE SUPERC18 with Encapsulated Bonding Technology (EBT)

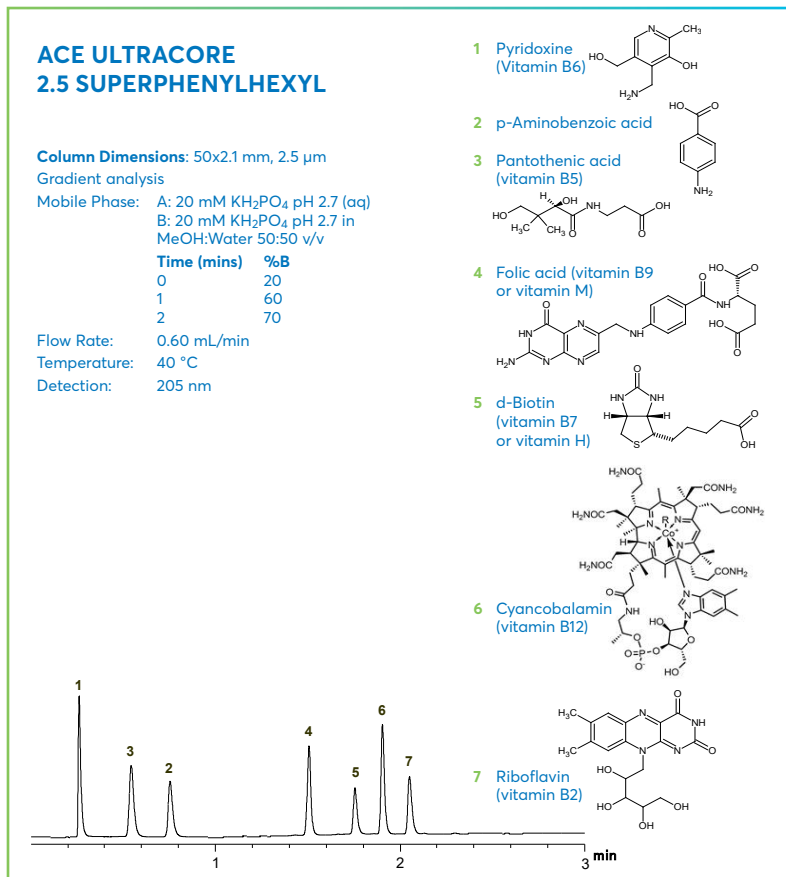


### ACE® ULTRACORE SUPERPHENYLHEXYL with Encapsulated Bonding Technology (EBT)

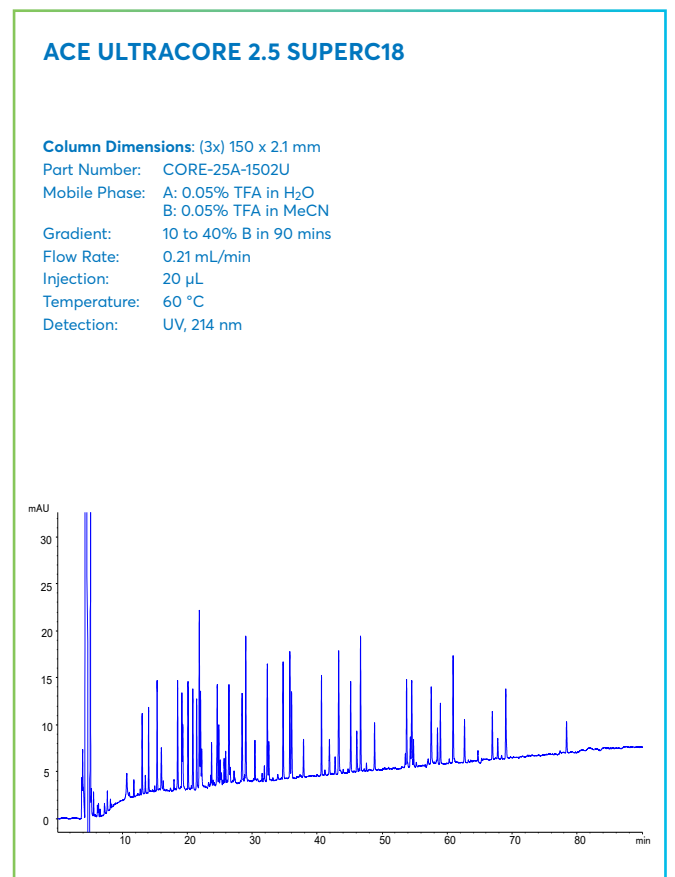




WATER SOLUBLE VITAMINS



TRYPTIC DIGEST OF BSA USING COUPLED COLUMNS



## ORDERING INFORMATION

### AVANTOR® ACE® ULTRACORE, 2.5 µm PARTICLES SIZES

- HPLC/UHPLC hardware format with 1,000 bar / 15,000 psi pressure limit

Column Dimensions	SuperC18	SuperPhenylHexyl
2.1 x 50 mm	CORE-25A-0502U	CORE-25B-0502U
2.1 x 75 mm	CORE-25A-7502U	CORE-25B-7502U
2.1 x 100 mm	CORE-25A-1002U	CORE-25B-1002U
2.1 x 125 mm	CORE-25A-1202U	CORE-25B-1202U
2.1 x 150 mm	CORE-25A-1502U	CORE-25B-1502U
3.0 x 50 mm	CORE-25A-0503U	CORE-25B-0503U
3.0 x 75 mm	CORE-25A-7503U	CORE-25B-7503U
3.0 x 100 mm	CORE-25A-1003U	CORE-25B-1003U
3.0 x 125 mm	CORE-25A-1203U	CORE-25B-1203U
3.0 x 150 mm	CORE-25A-1503U	CORE-25B-1503U
4.6 x 50 mm	CORE-25A-0546U	CORE-25B-0546U
4.6 x 75 mm	CORE-25A-7546U	CORE-25B-7546U
4.6 x 100 mm	CORE-25A-1046U	CORE-25B-1046U
4.6 x 125 mm	CORE-25A-1246U	CORE-25B-1246U
4.6 x 150 mm	CORE-25A-1546U	CORE-25B-1546U
<b>ACE guard cartridges (3pk)</b>		
For 2.1 & 3.0mm ID columns*	CORE-A-GD2U	CORE-B-GD2U
For 4.6mm ID columns*	CORE-A-GD4U	CORE-B-GD4U

\*Guards require holder H0011

### AVANTOR® ACE® ULTRACORE, 5 µm PARTICLES SIZES

- HPLC/UHPLC hardware format with 1,000 bar / 15,000 psi pressure limit

Column Dimensions	SuperC18	SuperPhenylHexyl
2.1 x 50 mm	CORE-5A-0502U	CORE-5B-0502U
2.1 x 75 mm	CORE-5A-7502U	CORE-5B-7502U
2.1 x 100 mm	CORE-5A-1002U	CORE-5B-1002U
2.1 x 125 mm	CORE-5A-1202U	CORE-5B-1202U
2.1 x 150 mm	CORE-5A-1502U	CORE-5B-1502U
2.1 x 250 mm	CORE-5A-2502U	CORE-5B-2502U
3.0 x 50 mm	CORE-5A-0503U	CORE-5B-0503U
3.0 x 75 mm	CORE-5A-7503U	CORE-5B-7503U
3.0 x 100 mm	CORE-5A-1003U	CORE-5B-1003U
3.0 x 125 mm	CORE-5A-1203U	CORE-5B-1203U
3.0 x 150 mm	CORE-5A-1503U	CORE-5B-1503U
3.0 x 250 mm	CORE-5A-2503U	CORE-5B-2503U
4.6 x 50 mm	CORE-5A-0546U	CORE-5B-0546U
4.6 x 75 mm	CORE-5A-7546U	CORE-5B-7546U
4.6 x 100 mm	CORE-5A-1046U	CORE-5B-1046U
4.6 x 125 mm	CORE-5A-1246U	CORE-5B-1246U
4.6 x 150 mm	CORE-5A-1546U	CORE-5B-1546U
4.6 x 250 mm	CORE-5A-2546U	CORE-5B-2546U
<b>ACE guard cartridges (5pk)</b>		
For 2.1 & 3.0mm ID columns*	CORE-A-0102GD	CORE-B-0102GD
For 4.6mm ID columns*	CORE-A-0103GD	CORE-B-0103GD

\*For use at HPLC pressures. Guards require holder H0001 & Coupler C0001

