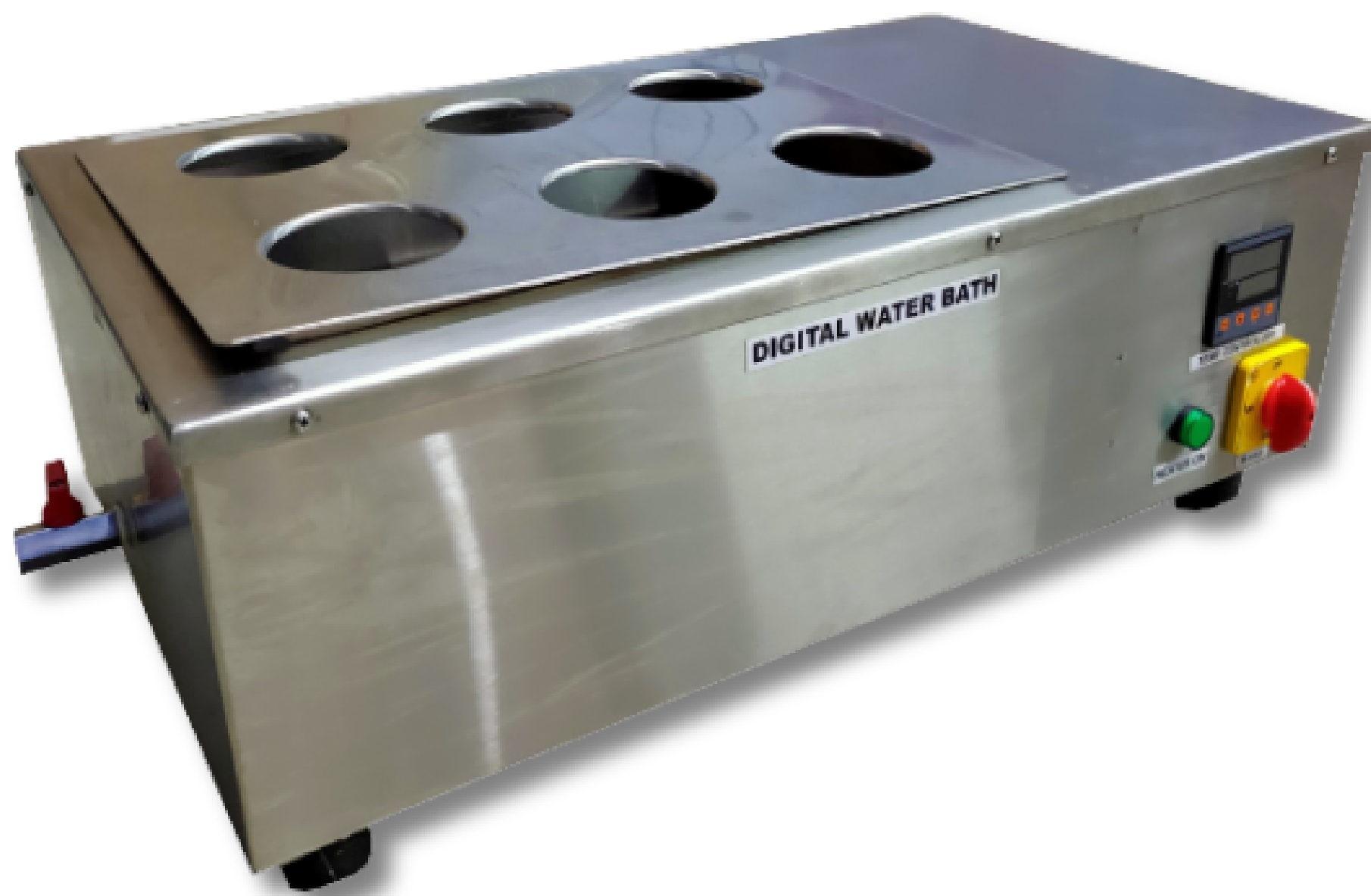


DIGITAL WATER BATH



Specifications:

This range of rectangular water bath systems is suitable for general boiling applications in laboratories. These systems offer loads of features that facilitate easy operation and comfortable working in any laboratory; the stainless steel inner chamber is easy to clean and the drain plug is fitted for quick water drainage. If your application needs stirring, a high-speed stirrer can be fitted on request.

The standard models of our rectangular water bath units come with 6 and 12 holes (75 mm Diameter); however, if you require a unit with 9 holes, we can also construct with matched specifications you may require for specific applications. These high-quality rectangular water baths are manufactured with single and double-walled construction, special grade mineral wool is used as insulation, which minimizes heat loss. A number of optional accessories can be fitted enabling you to take optimum advantage of these water baths, which may include a PID controller, auto cut-off device, digital indicator buzzer alarm, etc.

Features

- Single and double walled construction Micro Processor Digital PID Controller
Supplied with removable concentric rings Stainless steel inner chamber

Construction	Double Walled	
Capacity	10 Liters	15 Liters
Chamber Dimensions	350 x 250 x 100 mm	405 x 305 x 100 mm
No. of holes	6	12
Holes Dia.	75 mm	
Temperature range	5°C above ambient to 100°C	
Temperature Sensor	PT-100	
Heater	1000/1500 Watts	
Temperature Accuracy	±0.5°C	
Material of Construction	▪ Inner chamber and lid - Stainless Steel (SS-304 grade)	
	▪ Outer chamber - Stainless Steel (SS-304 grade)	
	▪ Special grade mineral wool	
Heating	Immersion heaters (ISI Brand)	
Control panel	▪ On/off switch	
	▪ Heating and mains indicators	
	▪ Micro Processor Digital PID Controller	
Power	▪ 220 V / 50 Hz	