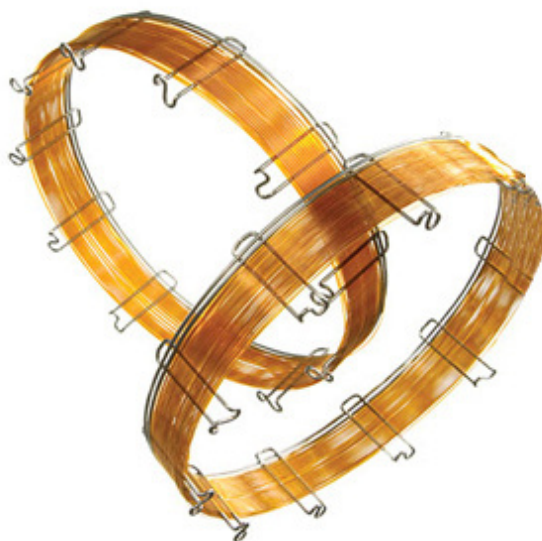


**RSolv<sup>®</sup>**  
CHROMATOGRAPHY PRODUCTS

# GC Columns CATALOGUE 2023



## RSolv® - Capillary Columns

- High-performance individually tested columns
- 7" (or 5") rugged cage
- Custom columns available to suit your specific application
- FAST GC columns available to speed up your analysis
- Best value in capillary columns anywhere
- Batch tested to dramatically reduce the price
- Ideal for aggressive applications
- Available in the most popular phases

RSolv®-Capillary Columns are manufactured from the highest quality polyimide coated synthetic fused silica. They are mounted on a rugged wear-resistant cage. Each RSolv® Column is individually tested to guarantee column performance and comes with a test chromatogram, instruction manual.

**Note:** If the column you need is not available in our standard offering request a custom RSolv® Column made to your Individual specifications.

**We can offer comparative alternate GC columns against the below mentioned phases**

| Composition   | USP Designation                | Similar Phases   |
|---|--------------------------------|--|
| <b>100% Dimethylpolysiloxane</b>                                | <b>G1, G2, G38</b>             | DB-1ms, HP-1ms, Rtx®-1ms, MEGA-1 MS, CP-Sil 5CB low-bleed/ms   |
| <b>100% Dimethylpolysiloxane</b>                                | <b>G1, G2, G38</b>             | 007-1, CP-Sil 5CB, DB-1, DB-1ht, HP-1, HP-101, MEGA-1, MEGA-1 HT, OV™-1, RSL-150, RSL-160, Rtx®-1, SE-30™, SPB™-1, SPB™-Sulfur, ULTRA-1, SP-2100, BP-1, DC-200, PE-1, ZB-1   |
| <b>5% Phenyl equivalent Polysilphenylene-Siloxane</b>           |                                | DB-5ms, Rtx®-5 Sil ms, BPX™-5, 007-5ms, MEGA-5 MS, MEGA-5 MS Xil, HP-5ms   |
| <b>5% Phenyl -95% Methylpolysiloxane</b>                        | <b>G27, G36</b>                | 007-2, CP-Sil 8CB, DB-5, DB-5.625, DB-5ht, HP-5, MEGA-5, HP-5ms, OV™-5, PTE-5, PTE-5QTM, PAS-5, RSL-200, Rtx®-5, Rtx®-5ms, SAC-5, SE™-54, SPB™-5, ULTRA-2, XTI-5, SE™-52, BP-5, PE-2, ZB-5   |
| <b>20% Phenyl -80% Methylpolysiloxane</b>                       | <b>G28, G32</b>                | 007-7, Rtx®-20, SPB™-20, VOCOL™, MEGA-20, PE-7   |
| <b>35 Phenyl -65% Methylpolysiloxane</b>                        | <b>G42</b>                     | DB-35ms, Rtx®-35, SPB™-35, SUP-HERB™, MDN-35, BPX™-35, MEGA-35, 007-11, DB-35, DB-35ms, HP-35, RSL-300, Rtx®-35, SPB™-35, SPB™-608, OV™-11, PE-35, SUP-HERB™, MEGA-35 MS   |
| <b>50 Phenyl -50% Methylpolysiloxane</b>                        | <b>G3</b>                      | DB-17ms, H5-50+, Rtx®-50, SP-2250, SPB™-50, SPB™-17, BPX™-50, Rtx®-65TG, BPX™-50, CP-TAB-CB, MEGA-17, MEGA-17 MS, MEGA-17 HT, 007-17, DB-17, DB-17ht, HP-17, HP-50+, Rtx®-50, SP-50, SP-2250, SPB™-50, CP-Sil 24CB, PE-17, ZB-50     |
| <b>6% Cyanopropylphenyl - 94% Methylpolysiloxane</b>            | <b>G43</b>                     | 007-1301, DB-624, DB-1301, HP-1301, HP-624, MEGA-624, MEGA-1301, Rtx®-1301, Rtx®-624, SPB™-1301, SPB™-624, 007-624, ZB-624   |
| <b>14% Cyanopropylphenyl -Methylpolysiloxane</b>                |                                | 007-1701, CP-Sil 19CB, DB-1701, HP-1701, OV™-1701, MEGA-1701, PAS-1701, Rtx®-1701, SPB™-1701, BP-10, ZB-1701   |
| <b>Trifluoropropyl - Methylpolysiloxane</b>                     | <b>G6</b>                      | DB-210, RSL-400, Rtx®-200, OV™-202, OV™-210, OV™-215, MEGA-200, QF-1, SP-2401  |
| <b>50% Cyanopropylphenyl - 50% Methylpolysiloxane</b>           | <b>G7</b>                      | 007-225, CP-Sil 43CB, DB-225, HP-225, OV™-225, RSL-500, Rtx®-225, MEGA-225, BP-225, PE-225   |
| <b>Poly 90% biscyanopropyl - 10% Cyanopropylphenyl siloxane</b> | <b>G8</b>                      | DB-23, CP-Sil 84, Rtx®-2330, SP-2330   |
| <b>Polybiscyanopropylsiloxane</b>                               | <b>G5</b>                      | CP-Sil 88, Rtx®-2330, MEGA-10, SP-2340   |
| <b>Polybiscyanopropylsiloxane</b>                               | <b>G5,G14,G15, G16,G20,G39</b> | DB-WAX, Rtx®-WAX, Supelcowax™-10, MEGA-WAX, MEGA-WAX MS, MEGA-WAX Plus, 007-CW, Carbowax® 20M, CP-Wax 52CB, DB-WAXetr, DB-WAX, Rtx®-WAX, HP-20M, HP-Wax, Innowax™, Omegawax™, Stabilwax®, Supelcowax®-10, Superox® II, BP-20, ZB-WAX |
| <b>Polyethyleneglycol Acid Modified</b>                         | <b>G 25,G35</b>                | 007-FFAP, CP-Wax 58CB, DB™-FFAP, HP™-FFAP, Nukol™, MEGA-FFAP EXT MEGA-ACID (FFAP), OV™-351, SP-1000, Stabilwax®-DA, Superox®-FA, BP-21   |
| <b>Polyethyleneglycol Base Modified</b>                         |                                | Stabilwax®-DB, CAM, Carbowax® Amine, MEGA-WAX BA, CP Wax 51  |
| <b>PONA Analysis</b>  |                                | 007-1-100-0.5F, CP-Sil PONA CB, DB-Petro100, Petrocol™ DH, PONA, MEGA-1 PONA, Ttx-1PONA, HP-PONA   |

**Contact us for more info**