



Regis Chiral Technologies

Authorized Distributor



Ph.No: +91 – 40 – 3517 2288 / 89, +91 – 99082 46695

Email Id : info@rikiglobal.com, Website : www.rikiglobal.com



CHIRAL

Stationary Phases

Innovative columns from the experts in chiral chromatography.



PACKED COLUMNS AND BULK MEDIA

- Compatible with SFC & HPLC
- Scale from Analytical to Prep
- Robust Phases for Long Life

REFLECT™ Polysaccharide Chiral Stationary Phases

Polysaccharide chiral columns are the most widely used type of chiral stationary phases (CSPs) to separate enantiomers. REFLECT™ chiral columns are rugged polysaccharide phases suitable for a wide range of chiral compounds. Unique, proprietary, phase coverage provides excellent peak shape and improved resolution versus leading chiral phases. High resolution greatly improves preparative loading, leading to greater productivity and higher purity separations. Combined with attractive pricing and rapid delivery, REFLECT™ chiral columns deliver the performance and productivity you expect. REFLECT™ columns are available packed with immobilized and coated CSPs.



Immobilized Phases

- High efficient media with excellent peak shape and loading capacity
- Rugged, for long column lifetimes
- Compatible with a broad range of solvents and separation modes (NP, RP, Polar Organic, SFC)
- Fully scalable from 3- 20µm

Coated Phases

- High performance media delivers excellent peak shape and resolution
- Compatible with a wide range of solvents and separation modes (normal phase HPLC and SFC)
- Fully scalable from 3- 20µm

REFLECT™ Phase Characteristics

COLUMN	SELECTOR	EQUIVALENT COMPETITIVE PRODUCTS	USP	PARTICLE SIZES	pH RANGE
REFLECT™ I-Amylose A	Amylose tris(3,5-dimethylphenylcarbamate)	CHIRALPAK® IA, IA-3; LUX® i-Amylose 1	L99	3, 5, 10, 20 µm*	2 - 8*
REFLECT™ I-Cellulose B	Cellulose tris(3,5-dimethylphenylcarbamate)	CHIRALPAK® IB, IB-3	N/A		
REFLECT™ I-Cellulose C	Cellulose tris(3,5-dichlorophenylcarbamate)	CHIRALPAK® IC, IC-3; LUX® i-Cellulose 5	N/A		
REFLECT™ I-Cellulose J	Cellulose tris(4-methylbenzoate)	CHIRALPAK® IJ, IJ-3	N/A		
REFLECT™ I-Cellulose Z	Cellulose tris(3-Chloro-4-Methylcarbamate)	Similar to CHIRALCEL® OZ, LUX® Cellulose-2	N/A		
REFLECT™ C-Amylose A	Amylose tris(3,5-dimethylphenylcarbamate)	CHIRALPAK® AD, AD-H, AD-3; LUX® Amylose-1	L51		
REFLECT™ C-Cellulose B	Cellulose tris(3,5-dimethylphenylcarbamate)	CHIRALCEL® OD, OD-H, OD-3; LUX® Cellulose-1	L40		

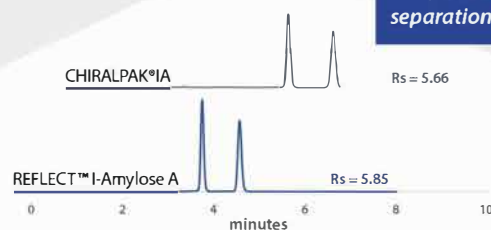
*Select phases available in 10 and 20 µm particle sizes. Contact a Chromatography Sales Representative for more information.
*Operating at the upper limit may shorten the column life.

The REFLECT™ Guarantee

Rely on guaranteed performance
Try REFLECT™ chiral columns *risk free!*



REFLECT™ I-Amylose A
provides equivalent
separation of Hydrobenzoin



Compound: Hydrobenzoin
Column Size: 5 µm, 25 cm x 4.6 mm
Mobile Phase: (80/20) Hexane/Ethanol
Flow Rate: 1.5 mL/min
Detection: UV 220 nm
REFLECT I-A Catalog #: 1-591204-300

WHELK-O[®] 1 Chiral Stationary Phases

1-(3,5-dinitrobenzamido)-1,2,3,4-tetrahydrophenanthrene

Excellent method development column for a wide range of compound classes. Proprietary WHELK-O[®] 1 columns are covalently bonded for long life and broad mobile phase compatibility, and offer alternative selectivity to polysaccharide chiral column phases. WHELK-O[®] 1 columns are available in analytical and preparative sizes.

- Excellent method development column with applicability to a wide range of compound classes
- Broad range of particle sizes and dimensions for analytical to preparative scale separations
- High loading capacity for excellent scalability in preparative applications
- Choice of enantiomeric phases allows inversion of peak elution order
- 1.8 μ m fully porous particles for high efficiency separations in both UHPLC & UHPSFC



PIRKLE-TYPE Chiral Stationary Phases

Pirkle-Type chiral stationary phases can be used for HPLC or SFC applications and are compatible with both normal and reversed-phase solvents. All Pirkle-Type CSPs are covalently bonded, therefore, the columns can tolerate all commonly used mobile phase combinations and are very durable. All of the Pirkle-Type CSPs are available in both enantiomeric forms.

- π -Electron Acceptor /
 π -Electron Donor Phases**
- WHELK-O[®] 1
 - WHELK-O[®] 2
 - ULMO

- π -Electron Acceptor Phases**
- DACG-DNB
 - Pirkle 1-J
 - α -Burke 2
 - β -Gem 1
 - Leucine
 - Phenylglycine



CHIROSIL[®] Crown-Ether Stationary Phases

(+) or (-)-(18-Crown-6)-tetracarboxylic acid

- CHIROSIL[®] columns are proven for the separation of amino acids and compounds containing primary amines
- CHIROSIL[®] ME columns are ideal for amino and chiral analysis where greater retention and capacity are needed
- Exhibits excellent durability due to covalent bonding
- Columns available in both enantiomeric forms, which allows for the inversion of peak elution order



**FREE
CHIRAL SCREENINGS**

Let REGIS find the right column and method for your compound. Results is as soon as possible.

Get Started today!

Visit chiral.com for technical resources, including hundreds of applications on all REGIS phases.



Ordering Information

Particle Size	Column Dimensions	WHELK-O® 1 (S,S) Catalog#	WHELK-O® 1 (R,R) Catalog#	REFLECT™ I-Amylose A Catalog#	REFLECT™ I-Cellulose B Catalog#	REFLECT™ I-Cellulose C Catalog#	REFLECT™ I-Cellulose J Catalog#	REFLECT™ I-Cellulose Z Catalog#	REFLECT C -Amylose A Catalog#	REFLECT C-Cellulose B Catalog#
3 µm*	50 x 2.1 mm	1-780128-300	1-780228-300	1-591109-300	1-592109-300	1-593109-300	1-594109-300	1-595109-300	1-580109-300	1-590109-300
	100 x 2.1 mm	1-780129-300	1-780229-300	1-591110-300	1-592110-300	1-593110-300	1-594110-300	1-595110-300	1-580110-300	1-590110-300
	150 x 2.1 mm	1-780130-300	1-780230-300	1-591111-300	1-592111-300	1-593111-300	1-594111-300	1-595111-300	1-580111-300	1-590111-300
	50 x 3 mm	1-780126-300	1-780226-300	1-591101-300	1-592101-300	1-593101-300	1-594101-300	1-595101-300	1-580101-300	1-590101-300
	150 x 3 mm	1-780124-300	1-780224-300	1-591105-300	1-592105-300	1-593105-300	1-594105-300	1-595105-300	1-580105-300	1-590105-300
	50 x 4.6 mm	1-780120-300	1-780220-300	1-591107-300	1-592107-300	1-593107-300	1-594107-300	1-595107-300	1-580107-300	1-590107-300
5 µm	100 x 4.6 mm	1-780221-300	1-780221-300	1-591102-300	1-592102-300	1-593102-300	1-594102-300	1-595102-300	1-580102-300	1-590102-300
	150 x 4.6 mm	1-780122-300	1-780222-300	1-591103-300	1-592103-300	1-593103-300	1-594103-300	1-595103-300	1-580103-300	1-590103-300
	50 x 2.1 mm	1-780155-300	1-780255-300	1-591212-300	1-592212-300	1-593212-300	1-594212-300	1-595212-300	1-580212-300	1-590212-300
	50 x 3 mm	1-780159-300	1-780259-300	1-591211-300	1-592211-300	1-593211-300	1-594211-300	1-595211-300	1-580211-300	1-590211-300
	100 x 3 mm	1-780160-300	1-780260-300	1-591214-300	1-592214-300	1-593214-300	1-594214-300	1-595214-300	1-580214-300	1-590214-300
	50 x 4.6 mm	1-780101-300	1-780201-300	1-591201-300	1-592201-300	1-593201-300	1-594201-300	1-595201-300	1-580201-300	1-590201-300
	100 x 4.6 mm	1-780105-300	1-780205-300	1-591202-300	1-592202-300	1-593202-300	1-594202-300	1-595202-300	1-580202-300	1-590202-300
	150 x 4.6 mm	1-780151-300	1-780251-300	1-591203-300	1-592203-300	1-593203-300	1-594203-300	1-595203-300	1-580203-300	1-590203-300
	250 x 4.6 mm	1-780152-300	1-780252-300	1-591204-300	1-592204-300	1-593204-300	1-594204-300	1-595204-300	1-580204-300	1-590204-300
	250 x 10 mm	1-780102-300	1-780202-300	1-591205-300	1-592205-300	1-593205-300	1-594205-300	1-595205-300	1-580205-300	1-590205-300
10 µm	250 x 21.1 mm	1-780107-300	1-780207-300	1-591206-300	1-592206-300	1-593206-300	1-594206-300	1-595206-300	1-580206-300	1-590206-300
	250 x 30 mm	1-780103-300	1-780203-300	1-591207-300	1-592207-300	1-593207-300	1-594207-300	1-595207-300	1-580207-300	1-590207-300
	250 x 50 mm	1-780104-300	1-780204-300	1-591208-300	1-592208-300	1-593208-300	1-594208-300	1-595208-300	1-580208-300	1-590208-300
	150 x 4.6 mm	1-786251-300	1-786703-300	1-591303-300	1-592303-300	1-593303-300	1-594303-300	-	1-580303-300	1-590303-300
	250 x 4.6 mm	1-786615-300	1-786515-300	1-591304-300	1-592304-300	1-593304-300	1-594304-300	-	1-580304-300	1-590304-300
	250 x 10 mm	1-786625-300	1-786525-300	1-591305-300	1-592305-300	1-593305-300	1-594305-300	-	1-580305-300	1-590305-300
	250 x 21.1 mm	1-786635-300	1-786535-300	1-591306-300	1-592306-300	1-593306-300	1-594306-300	-	1-580306-300	1-590306-300
	250 x 30 mm	1-786703-300	1-786709-300	1-591307-300	1-592307-300	1-593307-300	1-594307-300	-	1-580307-300	1-590307-300

*WHELK-O® 1 packaged with 3.5µm particle size

Particle Size	Column Dimensions	CHIROFIL RCA (+) Catalog #	CHIROFIL SCA (-) Catalog #	CHIROFIL ME RCA (+) Catalog #	CHIROFIL ME SCA (-) Catalog #
5 µm	100 x 3 mm	1-799010-300	1-799010-300	-	-
	100 x 4.6 mm	1-799008-300	1-799108-300	-	-
	150 x 4.6 mm	1-799001-300	1-799101-300	1-788001-300	1-788009-300
	250 x 4.6 mm	1-799002-300	1-799102-300	1-788002-300	1-788010-300
	250 x 10 mm	1-799006-300	1-799109-300	1-788003-300	1-788011-300
	150 x 21.1 mm	1-799003-300	1-799103-300	1-788018-300	1-788024-300
	250 x 21.1 mm	1-799005-300	1-799105-300	1-788004-300	1-788012-300
	150 x 30 mm	1-799033-300	1-799133-300	1-788020-300	1-788026-300
	250 x 30 mm	1-799055-300	1-799155-300	1-788019-300	1-788025-300
10 µm	150 x 4.6 mm	-	-	1-788005-300	1-788013-300
	250 x 4.6 mm	1-799014-300	1-799114-300	1-788006-300	1-788014-300
	250 x 10 mm	1-799020-300	1-799120-300	1-788007-300	1-788015-300
	150 x 21.1 mm	1-799119-300	1-7991165-300	1-788021-300	1-788027-300
	250 x 21.1 mm	1-799004-300	1-799104-300	1-788008-300	1-788016-300
	150 x 30 mm	1-799018-300	1-799118-300	1-788023-300	1-788029-300
	250 x 30 mm	1-799044-300	1-799117-300	1-788022-300	1-788028-300



Email: technical@rikiglobal.com
to Get Started

* DAICEL, CHIRALPAK, IA, IA-3, IB, IB-3, IC, IC-3, II, AD, AD-H, AD-3, OD, OD-H, OD-3, and OJ are registered trademarks of DAICEL Corporation. All such trademarks are used by Chiral Technologies under license from DAICEL Corporation. Chiral Technologies, Inc. is a subsidiary of DAICEL Corporation. LUX is a registered trademark of Phenomenex Inc.





CELERIS™

Achiral SFC Columns

High Performance SFC Separations



Packed Columns for SFC Separations

- Broad Selectivity
- Scalable from Analytical to Prep
- High Efficiency 3-, 5-, and 10µm Phases



CELERIS™ Achiral SFC Columns

High Performance SFC Separations at an Affordable Price

Supercritical fluid chromatography (SFC) is widely recognized as a preferred technique for chiral applications. More chemists are discovering the benefits of SFC as a greener alternative to HPLC separation of complex samples containing a range of different functional groups and polarities. SFC provides better resolution, faster separation, and higher sample throughput compared to HPLC.

The CELERIS™ family of achiral stationary phases has been specifically designed for SFC separations, delivering high capacity, broad selectivity, excellent peak shapes, and reproducible performance over long column lifetimes. CELERIS™ high performance phases provide rapid separation and recovery of purified components at a lower price than competitor offerings, enabling use of larger column sizes to reduce the number of purification cycles required to achieve purity of the batch.

**30%
SAVINGS**

CELERIS™ columns deliver high performance with an average savings of 30% over competitive column prices.



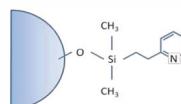
CELERIS™ Achiral Media Specifications

Pore Size	100 Å
Surface Area	350 m ² /g
Particle Size	3-, 5-, and 10µm

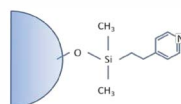
CELERIS™ 2EP & 4EP Columns

Ethyl pyridine phases are the workhorse phases for preparative and process scale SFC purifications. CELERIS™ 2EP (2-ethyl pyridine) and 4EP (4-ethyl pyridine) media is designed to be highly reproducible based on tight product specifications and low metal content. CELERIS™ 2EP is especially well-suited for separation of basic compounds and exhibits broad selectivity towards a variety of other compound types. The CELERIS™ 4EP phase offers alternate selectivity to the 2EP phase.

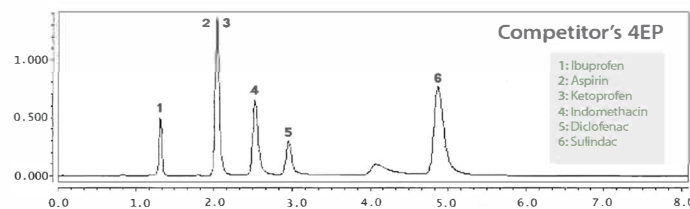
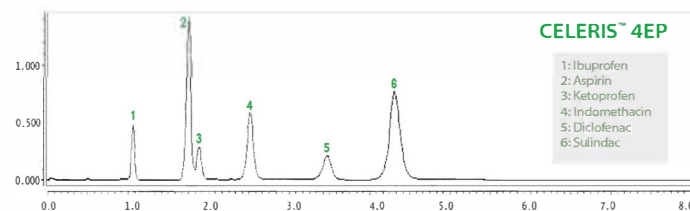
2-Ethyl Pyridine Chemical Structure



4-Ethyl Pyridine Chemical Structure



CELERIS™ ethyl pyridine phases provide similar or better separation than competing EP phases



Column Dimensions: 15 cm x 4.6 mm, 5 µm; Mobile Phase: CO₂/CH₃OH (80/20); Flow Rate: 3.20 mL/min; Temperature: 40° C; Pressure: 125 bar; Detection: UV 230 nm



CELERIS™ Achiral SFC Columns

Ordering Information

Particle Size	Dimensions	2Ep Catalog #	4EP Catalog #	Animo Catalog #	Arginine Catalog #	Diol Catalog #	PEI Catalog #	Silica Catalog #	
3 µm	2 cm x 3.0 mm		1-790528-300		-		-		
	5 cm x 2.1 mm	1-790210-300	1-790529-300	1-790729-300	-	1-710409-300	-	1-710109-300	
	10 cm x 2.1 mm	1-790211-300	1-790530-300	1-790730-300	-	1-710410-300	-	1-710110-300	
	15 cm x 2.1 mm	1-790212-300	1-790531-300	1-790731-300	-	1-710411-300	-	1-710111-300	
	2 cm x 3.0 mm	1-790209-300	1-790528-300	1-790728-300	-	1-710408-300	-	1-710108-300	
	5 cm x 3.0 mm	1-790208-300	1-790527-300	1-790727-300	-	1-710407-300	-	1-710107-300	
	10 cm x 3.0 mm	1-790207-300	1-790526-300	1-790726-300	-	1-710406-300	-	1-710106-300	
	15 cm x 3.0 mm	1-790206-300	1-790525-300	1-790725-300	-	1-710405-300	-	1-710105-300	
	5 cm x 4.6 mm	1-790202-300	1-790521-300	1-790721-300	-	1-710401-300	-	1-710101-300	
	10 cm x 4.6 mm	1-790203-300	1-790522-300	1-790722-300	-	1-710402-300	-	1-710102-300	
	15 cm x 4.6 mm	1-790204-300	1-790523-300	1-790723-600	-	1-710403-300	-	1-710103-300	
	25 cm x 4.6 mm	1-790205-300	1-790524-300	1-790724-300	-	1-710404-300	-	1-710104-300	
	5 µm	5 cm x 2.1 mm	1-790317-300	1-790515-300	1-790717-300	1-790917-300	1-710517-300	1-790817-300	1-710217-300
		10 cm x 2.1 mm	1-790316-300	1-790514-300	1-790716-300	1-790916-300	1-710516-300	1-790816-300	1-710216-300
15 cm x 2.1 mm		1-790306-300	1-790506-300	1-790706-300	1-790906-300	1-710506-300	1-790806-300	1-710206-300	
5 cm x 3.0 mm		1-790315-300	1-790513-300	1-790715-300	1-790915-300	1-710515-300	1-790815-300	1-710215-300	
10 cm x 3.0 mm		1-790313-300	1-790511-300	1-790713-300	1-790913-300	1-710513-300	1-790813-300	1-710213-300	
15 cm x 3.0 mm		1-790318-300	1-790516-300	1-790718-300	1-790918-300	1-710518-300	1-790818-300	1-710218-300	
5 cm x 4.6 mm		1-790314-300	1-790512-300	1-790714-300	1-790914-300	1-710514-300	1-790814-300	1-710214-300	
10 cm x 4.6 mm		1-790312-300	1-790510-300	1-790712-300	1-790912-300	1-710512-300	1-790812-300	1-710212-300	
15 cm x 4.6 mm		1-790305-300	1-790505-300	1-790705-300	1-790905-300	1-710505-300	1-790805-300	1-710205-300	
25 cm x 4.6 mm		1-790301-300	1-790501-300	1-790701-300	1-790901-300	1-710501-300	1-790801-300	1-710201-300	
25 cm x 10 mm		1-790302-300	1-790502-300	1-790702-300	1-790902-300	1-710502-300	1-790802-300	1-710202-300	
10 cm x 21.1 mm		1-790310-300	1-790517-300	1-790710-300	1-790910-300	1-710510-300	1-790810-300	1-710210-300	
15 cm x 21.1 mm		1-790309-300	1-790509-300	1-790709-300	1-790909-300	1-710509-300	1-790809-300	1-710209-300	
25 cm x 21.1 mm		1-790307-300	1-790507-300	1-790707-300	1-790907-300	1-710507-300	1-790807-300	1-710207-300	
15 cm x 30 mm		1-790308-300	1-790508-300	1-790708-300	1-790908-300	1-710508-300	1-790808-300	1-710208-300	
25 cm x 30 mm		1-790303-300	1-790503-300	1-790703-300	1-790903-300	1-710503-300	1-790803-300	1-710203-300	
15 cm x 50 mm		1-790311-300	1-790518-300	1-790711-300	1-790911-300	1-710511-300	1-790811-300	1-710211-300	
25 cm x 50 mm		1-790304-300	1-790504-300	1-790704-300	1-790904-300	1-710504-300	1-790804-300	1-710204-300	
10 µm		5 cm x 2.1 mm	1-790411-300	1-790613-300	-	-	1-710611-300	-	1-710311-300
		5 cm x 4.6 mm	1-790412-300	1-790614-300	-	-	1-710612-300	-	1-710312-300
	10 cm x 4.6 mm	1-790413-300	1-790615-300	-	-	1-710613-300	-	1-710313-300	
	15 cm x 4.6 mm	1-790401-300	1-790601-300	-	-	1-710601-300	-	1-710301-300	
	15 cm x 10 mm	1-790414-300	1-790604-300	-	-	1-710614-300	-	1-710314-300	
	15 cm x 21.1 mm	1-790403-300	1-790605-300	-	-	1-710603-300	-	1-710303-300	
	25 cm x 4.6 mm	1-790402-300	1-790602-300	-	-	1-710602-300	-	1-710302-300	
	25 cm x 10 mm	1-790404-300	1-790606-300	-	-	1-710604-300	-	1-710304-300	
	25 cm x 21.1 mm	1-790405-300	1-790607-300	-	-	1-710605-300	-	1-710305-300	
	25 cm x 30 mm	1-790407-300	1-790609-300	-	-	1-710607-300	-	1-710307-300	
25 cm x 50 mm	1-790408-300	1-790610-300	-	-	1-710608-300	-	1-710308-300		

1.8µm WHELK-O® 1

Chiral Stationary Phase

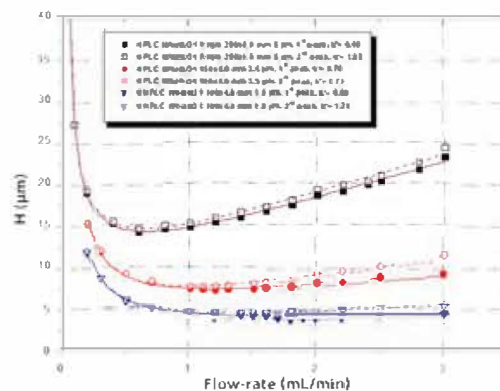
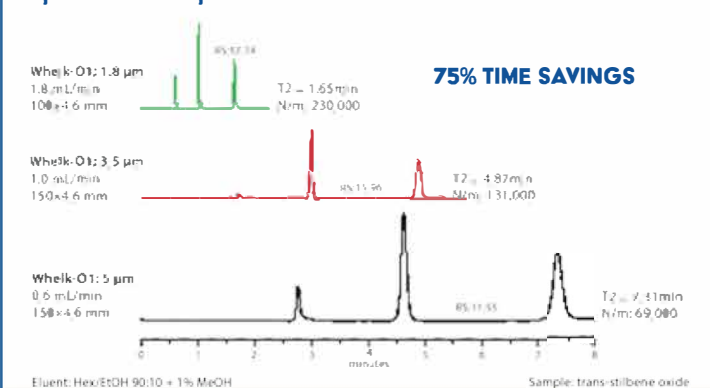
Experience high speed performance with chiral separations!



- Increase throughput and resolution—Great for rapid chiral screening
- 1.8µm fully porous particles for high efficiency separations in both UHPLC and UHPSFC
- Fully scalable phase from 1.8µm to 20µm, analytical to preparative size columns
- Invert peak elution order with availability of both enantiomeric phases for difficult separations
- Stable, long term performance for long column lifetimes at high flow rates and pressures

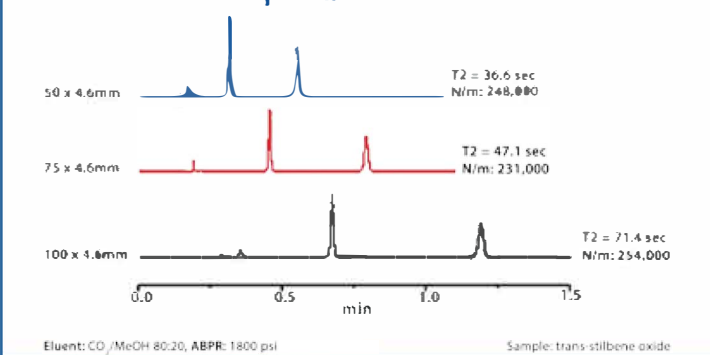
Sub-2µm particles provide very high efficiencies and resolution even at high flow rates, reducing analysis time and mobile phase consumption while actually increasing resolution. The Whelk-O 1 selector is bonded on 1.8µm totally porous silica for high efficiency separations. Rapid screening of racemate mixtures can be obtained in a fraction of the time improving throughput by greater than 3X. The Whelk-O 1 sub-2µm columns are compatible with both UHPLC and UHPSFC separations.

Rapid Chiral Separations—3X Faster



1.8µm particles maintain high performance over a wide range of linear velocities.

Sub 1 minute SFC Separations



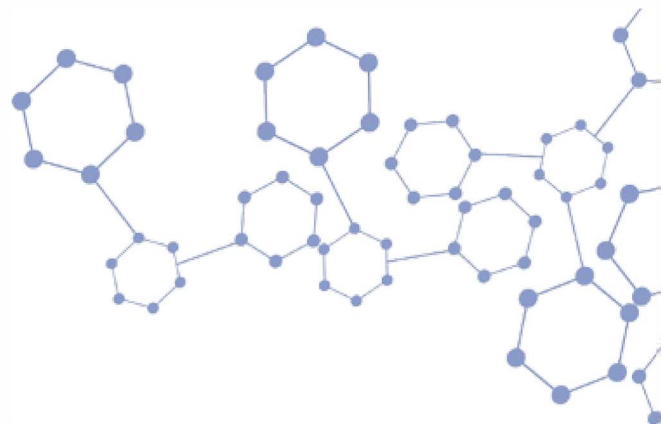
Make 1.8µm Whelk-O 1 your first choice for UHPLC/SFC chiral separations!

*Compared to equivalent 5µm phases.



1.8 μ m WHELK-O[®] 1

Chiral Stationary Phase



1.8 μ m

DIMENSIONS	(S,S) CATALOG #	(R,R) CATALOG #
5 cm x 2.1 mm	1-780163-300	1-780263-300
5 cm x 3 mm	1-780165-300	1-780265-300
5 cm x 4.6 mm	1-780162-300	1-780262-300
10 cm x 2.1 mm	1-780164-300	1-780264-300
10 cm x 3 mm	1-780166-300	1-780266-300
10 cm x 4.6 mm	1-780161-300	1-780261-300

Whelk-O 1's high loading capacity provides excellent scalability in HPLC and SFC for preparative applications.

3.5 μ m

DIMENSIONS	(S,S) CATALOG #	(R,R) CATALOG #
5 cm x 4.6 mm	1-780120-300	1-780220-300
10 cm x 4.6 mm	1-780121-300	1-780221-300
15 cm x 4.6 mm	1-780122-300	1-780222-300
25 cm x 4.6 mm	1-780123-300	1-780223-300
15 cm x 3.0 mm	1-780124-300	1-780224-300
10 cm x 3.0 mm	1-780125-300	1-780225-300
5 cm x 3.0 mm	1-780126-300	1-780226-300
2 cm x 3.0 mm	1-780127-300	1-780227-300
5 cm x 2.1 mm	1-780128-300	1-780228-300
10 cm x 2.1 mm	1-780129-300	1-780229-300
15 cm x 2.1 mm	1-780130-300	1-780230-300

5 μ m

DIMENSIONS	(S,S) CATALOG #	(R,R) CATALOG #
25 cm x 4.6 mm	1-780101-300	1-780201-300
25 cm x 10 mm	1-780102-300	1-780202-300
25 cm x 30 mm	1-780103-300	1-780203-300
25 cm x 50 mm	1-780104-300	1-780204-300
15 cm x 4.6 mm	1-780105-300	1-780205-300
15 cm x 2.1 mm	1-780106-300	1-780206-300
25 cm x 21.1 mm	1-780107-300	1-780207-300
15 cm x 30 mm	1-780108-300	1-780208-300
15 cm x 21.1 mm	1-780109-300	1-780209-300
10 cm x 21.1 mm	1-780110-300	N/A
10 cm x 4.6 mm	1-780151-300	1-780251-300
5 cm x 4.6 mm	1-780152-300	1-780252-300
3 cm x 4.6 mm	1-780153-300	1-780253-300
10 cm x 2.1 mm	1-780154-300	1-780254-300
5 cm x 2.1 mm	1-780155-300	1-780255-300
3 cm x 2.1 mm	1-780156-300	1-780256-300

10 μ m

DIMENSIONS	(S,S) CATALOG #	(R,R) CATALOG #
15 cm x 4.6 mm	1-786251-300	1-786252-300
25 cm x 4.6 mm	1-786615-300	1-786515-300
15 cm x 10 mm	N/A	1-786516-300
15 cm x 21.1 mm	1-786617-300	1-786518-300
25 cm x 10 mm	1-786625-300	1-786525-300
25 cm x 21.1 mm	1-786635-300	1-786535-300
50 cm x 21.1 mm	1-786645-300	1-786545-300
25 cm x 30 mm	1-786702-300	1-786708-300
25 cm x 50 mm	1-786703-300	1-786709-300
50 cm x 50 mm	1-786704-300	1-786710-300
50 cm x 30 mm	1-786716-300	1-786713-300
5 cm x 2.1 mm	1-786902-300	1-786903-300
5 cm x 4.6 mm	1-786906-300	1-786907-300
10 cm x 4.6 mm	1-786908-300	1-786909-300
25 cm x 4.6 mm	1-786351-300	1-786361-300

16 μ m

DIMENSIONS	(S,S) CATALOG #	(R,R) CATALOG #
15 cm x 4.6 mm	1-786351-300	1-786361-300



Make Whelk-O 1 your first choice for chiral separations. Learn more at registech.com/whelko.



Plot No-39 1st Floor Lavanya Arcade, Jayabheri Enclave
Gachibowli, Hyderabad-500032.Telangana
Mob : +91 99082 46685 Tel : 040 - 35172288/89