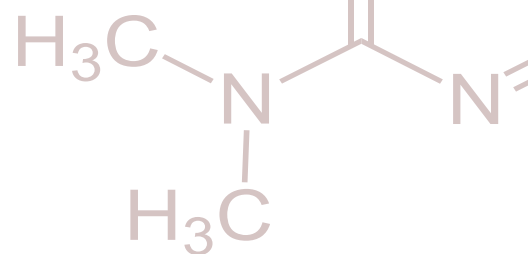
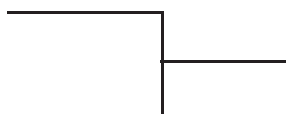
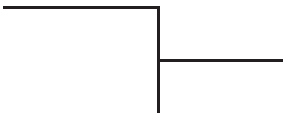
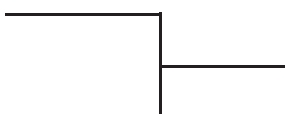


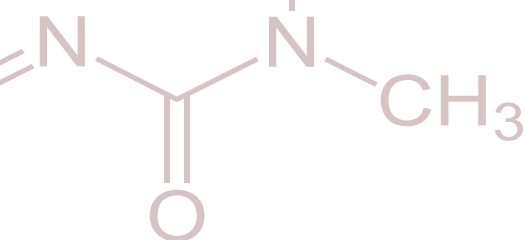
Application Guide





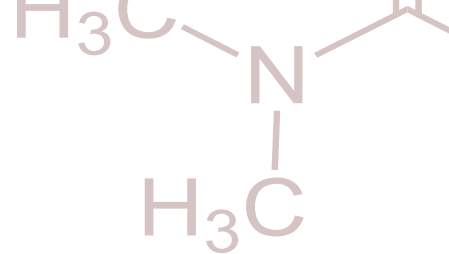
Content	Page
Specifications of RSolv Capella HPLC Phases	2
Diuretics  Aromatic Acids	3
Uracil and 5-Flurouracil  Creatine and Creatinine	4
Taxol  Steroids	5





Specifications of RSolv Capella HPLC Phases

Phase	Particle Size (hhh)	Pore Size (Åh)	Surface Area (h ² /hh)	Carbon Load (%h)	Endcapped	USP	Phase Code
RSolv Capella-60 Series							
C18	3, 5, 10	60	500	23	Yes	L1	01
C8	3, 5, 10	60	500	15	Yes	L7	02
C6	3, 5, 10	60	500	10	Yes	L15	03
C4	3, 5, 10	60	500	8	No	L26	04
Phenyl	3, 5, 10	60	500	16	Yes	L11	05
Diphenyl	5	60	500	10	Yes	L11	51
PFP	3, 5, 10	60	500	12	Yes	L43	06
CN	3, 5, 10	60	500	8	No	L10	07
AMINO	3, 5, 10	60	500	6	No	L8	08
DIOL	3, 5, 10	60	500	6	No	L20	09
DIOL-HL	5, 10	60	500	9	No	L20	79
Silica	3, 5, 10	60	500	n/a	n/a	L3	10
RSolv Capella-100 Series							
C18	3, 5, 10	100	325	19	Yes	L1	01
C8	3, 5, 10	100	325	11	Yes	L7	02
C6	3, 5, 10	100	325	8	Yes	L15	03
C4	3, 5, 10	100	325	6	No	L26	04
Phenyl	3, 5, 10	100	325	12	Yes	L11	05
PFP	3, 5, 10	100	325	9	Yes	L43	06
CN	3, 5, 10	100	325	6	No	L10	07
AMINO	3, 5, 10	100	325	4	No	L8	08
DIOL	3, 5, 10	100	325	4	No	L20	09
Silica	3, 5, 10	100	325	n/a	n/a	L3	10
RSolv Capella-300 Series							
C18	5, 10	300	100	8	Yes	L1	01
C8	5, 10	300	100	5	Yes	L7	02
C4	5, 10	300	100	3	No	L26	04
Phenyl	5, 10	300	100	5	Yes	L11	05
CN	5, 10	300	100	3	No	L10	07
AMINO	5, 10	300	100	3	No	L8	08
DIOL	5, 10	300	100	2	No	L20	09
Silica	5, 10	300	100	n/a	n/a	L3	10
RSolv Capella PharmaBOND Phases							
C18	5, 10	125	300	10	Yes	L1	01
Phenyl	10	125	300	8	Yes	L11	05
CN	10	125	300	6	No	L10	07
Amino	10	125	300	4	No	L8	08
Silica	10	125	300	n/a	n/a	L3	10



HPLC Applications

Diuretics

Diuretics

Column: RSOLV CAPELLA C18 5 μ m

Catalog No: RS1-3B050-15046

Dimensions: 150 X 4.6MM

Eluent: 60:40 A:B

A: 20 mM NH₂H₂, pH 3.2

B: Acetonitrile

Flow Rate: 1.5 ml/min Temperature: 40°C

Detection: UV at 280 nm

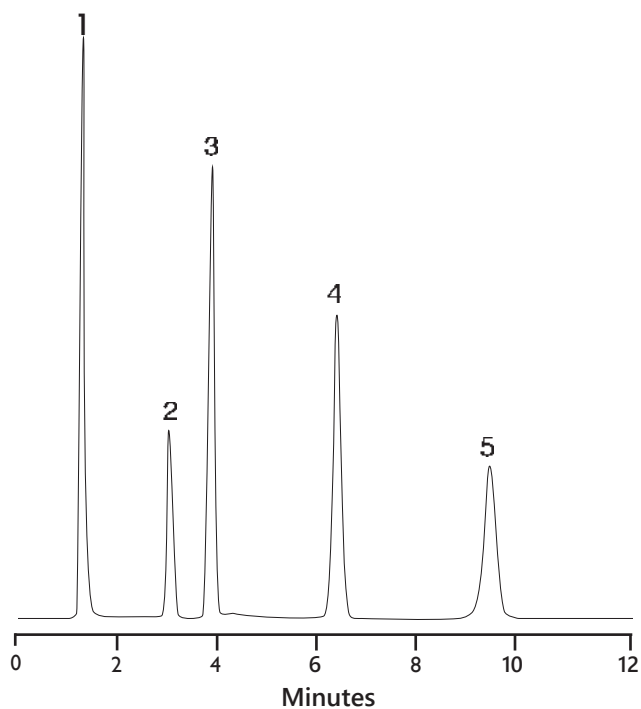
Injection: 10 μ l (1 mg/ml sample)

1. Hydrochlorothiazide

2. Chlorthalidone

3. Diazoxide

4. Furosemide



Aromatic Acids

Aromatic Acids

Column: RSOLV CAPELLA C18 5 μ m

Catalog No: RS1-3B050-10046

Dimensions: 100 X 4.6MM

Eluent: 50:50 A:B

A: 0.1M H₃, pH 2.0

B: Methanol

Flow Rate: 1.5 ml/min Temperature: Ambient

Detection: UV at 240 nm

Injection: 5 μ l (1 mg/ml sample)

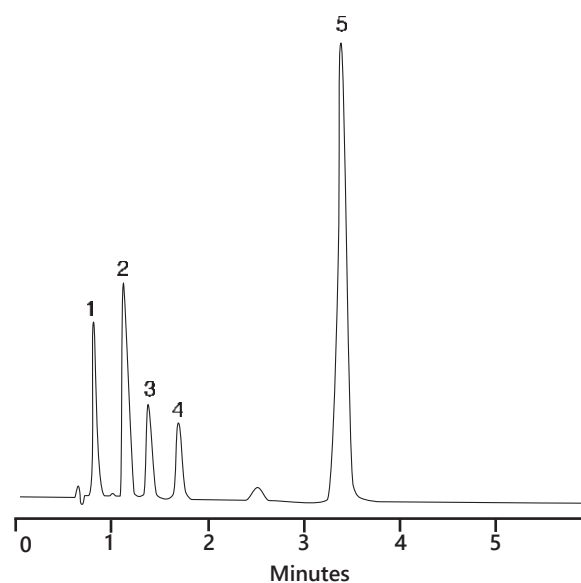
1. p-Aminobenzoic acid

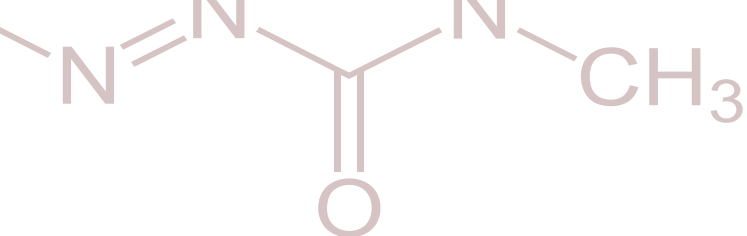
2. p-Hydroxybenzoic acid

3. o-Aminobenzoic acid

4. Benzyl alcohol

5. Salicylic acid





Uracil and 5-Fluorouracil

Uracil and 5-Fluorouracil

Column: RSOLV CAPELLA 60Å DIOL 5µm

Catalog No: RS1-7A050-25046

Dimensions: 250 X 4.6MM

Eluent: 80:20 A:B

A: Acetonitrile

B: Water

FlowRate: 1.0 ml/min

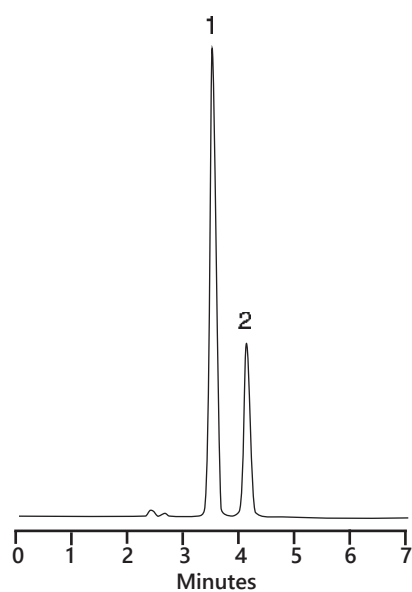
Temperature: 20°C

Detection: UV at 254 nm

Injection: 10 µl (1 mg/ml sample)

1.5-Fluorouracil

2.Uracil



Creatine and Creatinine

Creatine and Creatinine

Column: RSOLV CAPELLA PHARMABOND C18 125Å 10µm

Catalog No: RS1-22C100-30039

Dimensions: 300 X 3.9MM

Eluent: 70:30 A:B*

A: 0.2% H3 4

B: Acetonitrile

* with 1.4 mg/ml dodecyl sulfate sodium

Flow Rate: 1.0 ml/min

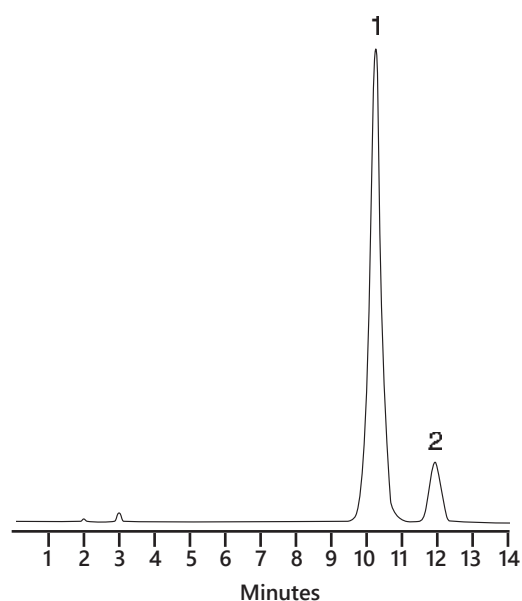
Temperature: 20°C

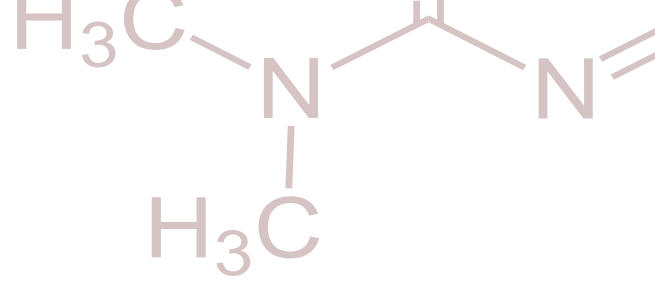
Detection: UV at 210 nm

Injection: 5 µl (1 mg/ml sample)

1.Creatine

2.Creatinine





Taxol

Taxol

Column: RSOLV CAPELLA 60Å PFP 5µm

Catalog No: RS1-23A050-25046

Dimensions: 250 X 4.6MM

Eluent: 50:50 A:B

A: Acetonitrile

B: Water

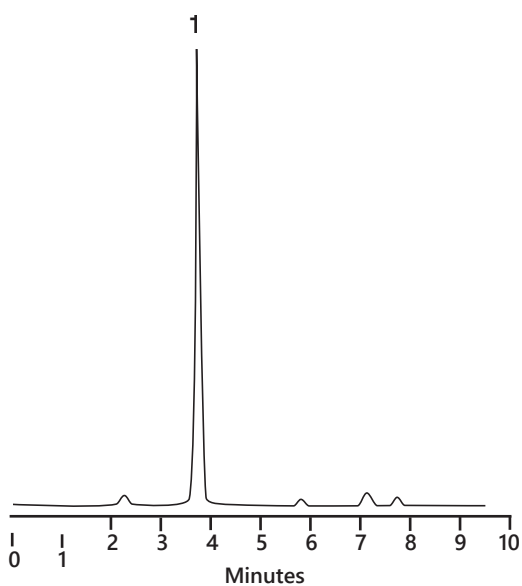
Flow Rate: 1.0 ml/min

Temperature: 30°C

Detection: UV at 230 nm

Injection: 10 µl (1 mg/ml sample)

1. Taxol



Steroids

Steroids

Column: RSOLV CAPELLA C18 5µm

Catalog No: RS1-3B050-25046

Dimensions: 250 X 4.6MM

Eluent: 66 A:B

A: Acetonitrile

B: Water

Flow Rate: 1.0 ml/min

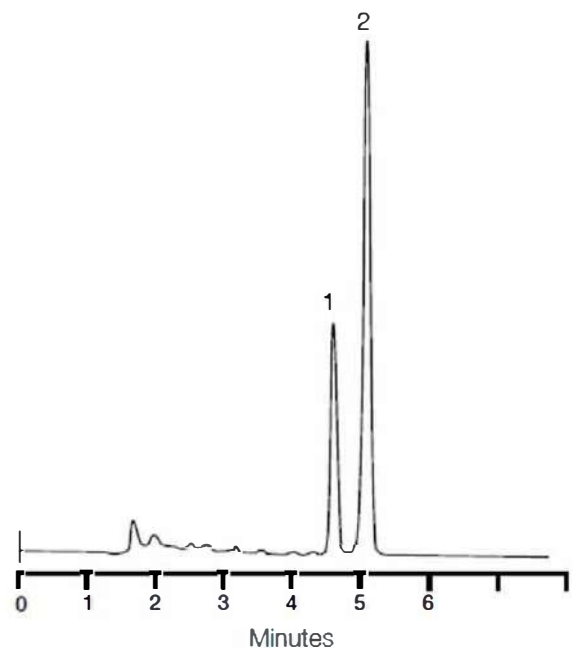
Temperature: 20°C

Detection: UV at 200 nm

Injection: 10 µl (1 mg/ml sample)

1. Ethinyl Estradiol

2. Norethindrone



RSolv[®]
CHROMATOGRAPHY PRODUCTS

RSolv HPLC columns- where quality meets value,
precision you can trust, affordability you'll love

 **RIKI GLOBAL**

Plot No 39 1st Floor Lavanya Arcade, Jayabheri Enclave, Gachibowli, Hyderabad-500032.Telangana

Mob:+91 99082 46685 Tel:040 - 35172288/89